



WKK: producer of fixation clips

Through our subsidiary WKK Automotive, WKK has access to its own production facility for the development and production of plastic clips for the automotive industry and other markets such as the solar market. The clips are used for the fixation and guidance of cables in vehicles and on profiles.

WKK offers you an extensive range of fixation clips such as edge clips (also for corrugated tubing), clips with fir tree & with arrowhead and solar clips which are suitable for different profile thicknesses and hole diameters. We also offer you the opportunity to have clips custom made to meet your specific requirements.

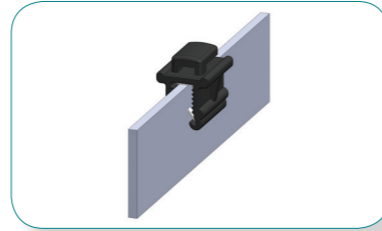
FIXATION CLIPS

Edge clips

Edge clips are an excellent solution for attachment of cables, wires and tubes on a plastic or metal profile. To choose the right type of edge clip, you should take into account the profile thickness and the way in which the cable will be mounted. WKK offers edge clips for different applications: with the cable tie fastening on top or on the side of the clip and by which the cable tie can be attached right-angled on or in longitudinal direction of the profile.

Material specifications:

Clip : Polyamide 6.6 HS, black, impact resistant, heat resistant, UV resistant
 Cable tie : Polyamide 6.6 HS, black, impact resistant, heat resistant, UV resistant
 Temperature range : -40 °C to +120 °C (short time 140 °C)
 Metal clamp : Spring steel, hardened surface
 : The surface replies to the highest requirements for corrosion protection



Types of edge clips for profile thickness 0,7 - 3,0 mm

Typenr.	Profile thickness in mm	Mounting of cable
KC1 *	0,7 - 3,0	<ul style="list-style-type: none"> Cable tie fastening on top of the clip Cable tie right-angled on the profile
KC2 *	0,7 - 3,0	<ul style="list-style-type: none"> Cable tie fastening on the side of the clip Cable tie right-angled on the profile
KC3 *	0,7 - 3,0	<ul style="list-style-type: none"> Cable tie fastening on top of the clip Cable tie in longitudinal direction of the profile
KC5 *	0,7 - 3,0	<ul style="list-style-type: none"> Cable tie fastening on the side of the clip Cable tie in longitudinal direction of the profile
KC15 *	0,7 - 3,0	<ul style="list-style-type: none"> Cable tie fastening on top and on the side of the clip Cable tie can be mounted in 4 ways
KC17-16036-CVUV **	0,7 - 3,0	<ul style="list-style-type: none"> Cable tie fastening on top of the clip Cable tie right-angled on the profile
KC18-16036-CVUV **	0,7 - 3,0	<ul style="list-style-type: none"> Cable tie fastening on the side of the clip Cable tie right-angled on the profile
KC19-16036-CVUV **	0,7 - 3,0	<ul style="list-style-type: none"> Cable tie fastening on top of the clip Cable tie in longitudinal direction of the profile
KC20-16036-CVUV **	0,7 - 3,0	<ul style="list-style-type: none"> Cable tie fastening on the side of the clip Cable tie in longitudinal direction of the profile
KC11	0,7 - 3,0	<ul style="list-style-type: none"> With plug attachment
KC13	0,7 - 3,0	<ul style="list-style-type: none"> With plug attachment

* = Also available with cable tie: 200 x 4,8 mm (PA 6.6 / black)

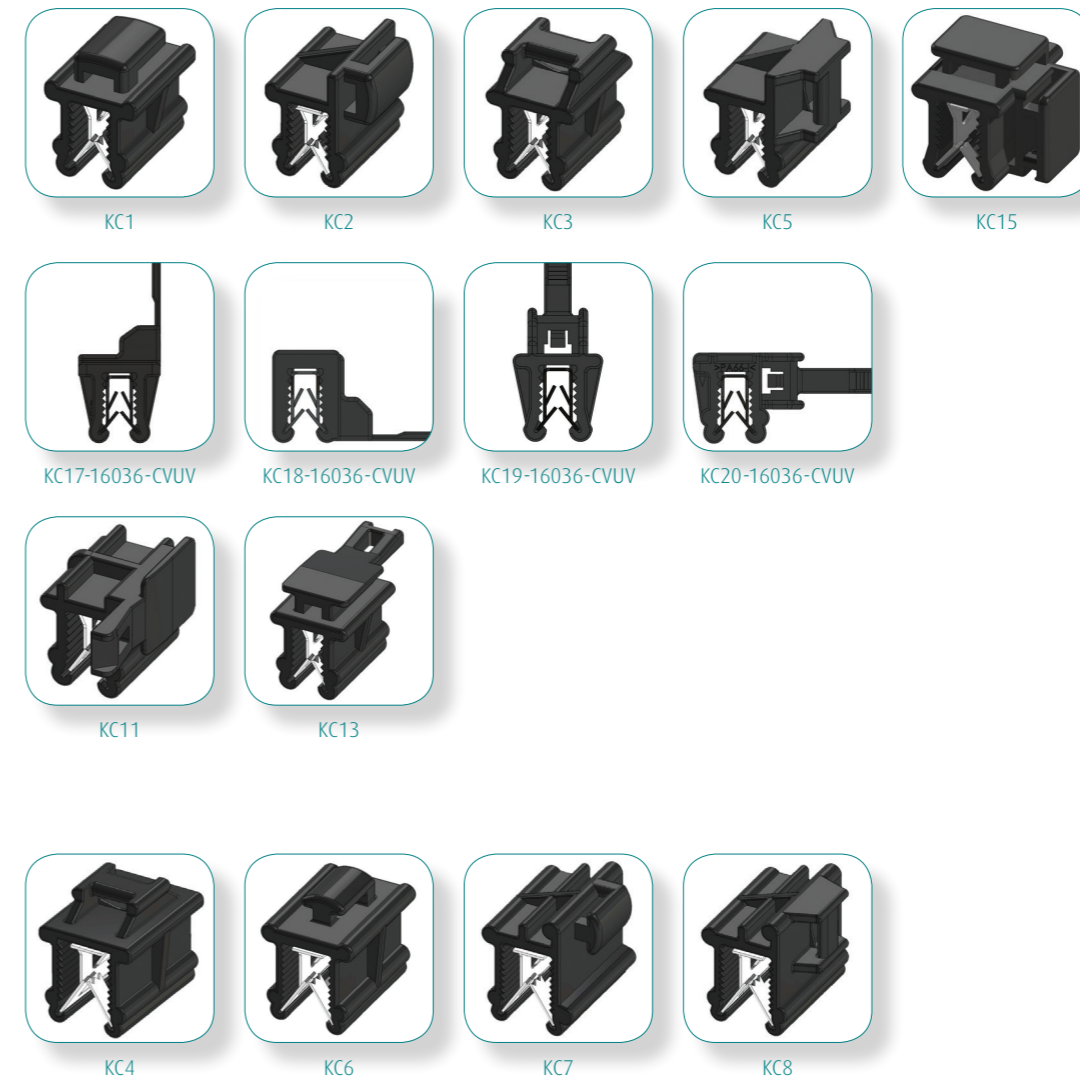
** = Delivered with cable tie: 160 x 3,6 mm (PA 6.6 / black)

For other types, please see the following page

Types of edge clips for profile thickness 3,0 - 6,0 mm

Typenr.	Profile thickness in mm	Mounting of cable
KC4 *	3,0 - 6,0	<ul style="list-style-type: none"> Cable tie fastening on top of the clip Cable tie in longitudinal direction of the profile
KC6 *	3,0 - 6,0	<ul style="list-style-type: none"> Cable tie fastening on top of the clip Cable tie right-angled on the profile
KC7 *	3,0 - 6,0	<ul style="list-style-type: none"> Cable tie fastening on the side of the clip Cable tie right-angled on the profile
KC8 *	3,0 - 6,0	<ul style="list-style-type: none"> Cable tie fastening on the side of the clip Cable tie in longitudinal direction of the profile

* = Also available with cable tie: 200 x 4,8 mm (PA 6.6 / black)

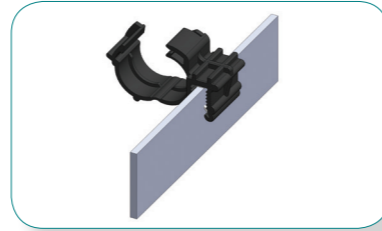


Edge clips for corrugated tubing

These edge clips are designed for guiding corrugated tubes on a plastic or metal profile. To choose the right type of edge clip for corrugated tubing, you should take into account the outer diameter of the corrugated tube, the profile thickness and the way in which the cable will be mounted.

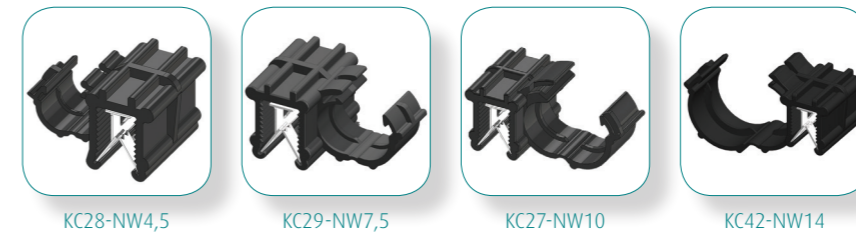
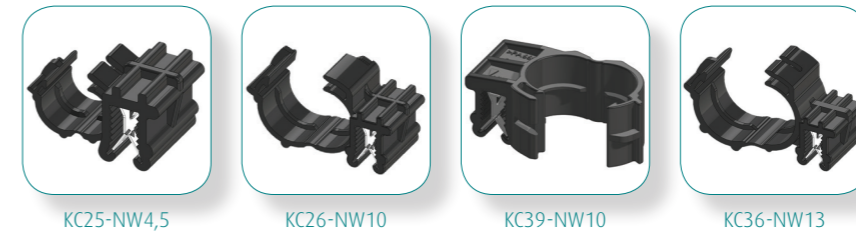
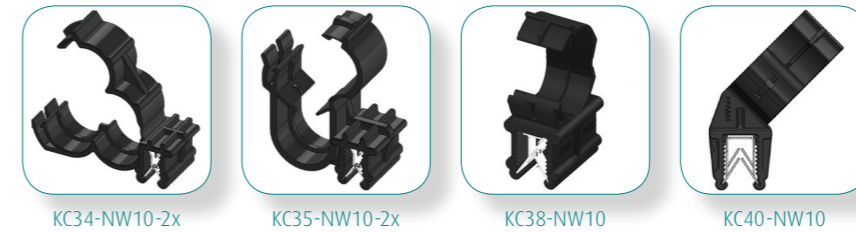
Material specifications:

- Clip : Polyamide 6.6 HS, black, impact resistant, heat resistant, UV resistant
- Temperature range : -40 °C to +120 °C (short time 140 °C)
- Metal clamp : Spring steel, hardened surface
- : The surface replies to the highest requirements for corrosion protection



Types of edge clips for corrugated tubing

Typenr.	Profile thickness in mm	Inside measure in mm	Mounting of cable
KC24-NW4,5	0,7 - 3,0	4,5	• Grip in longitudinal direction of the profile on top of the clip
KC21-NW7,5	0,7 - 3,0	7,5	• Grip in longitudinal direction of the profile on top of the clip
KC32-NW17	0,7 - 3,0	17,0	• Grip in longitudinal direction of the profile on top of the clip
KC30-NW4,5	3,0 - 6,0	4,5	• Grip in longitudinal direction of the profile on top of the clip
KC12-NW13	3,0 - 6,0	13,0	• Grip in longitudinal direction of the profile on top of the clip
KC23-NW4,5	0,7 - 3,0	4,5	• Grip right-angled on the profile on top of the clip
KC22-NW10	0,7 - 3,0	10,0	• Grip right-angled on the profile on top of the clip
KC31-NW13	0,7 - 3,0	13,0	• Grip right-angled on the profile on top of the clip
KC33-NW10-2x	0,7 - 3,0	2x 10,0	• Grip right-angled on the profile on top of the clip
KC34-NW10-2x	0,7 - 3,0	2x 10,0	• Grip right-angled on the profile on top of the clip
KC35-NW10-2x	0,7 - 3,0	2x 10,0	• Grip right-angled on the profile on top of the clip
KC38-NW10	3,0 - 6,0	10,0	• Grip right-angled on the profile on top of the clip
KC40-NW10	3,0 - 6,0	10,0	• Grip right-angled on the profile on top of the clip
KC25-NW4,5	0,7 - 3,0	4,5	• Grip in longitudinal direction of the profile on the side of the clip
KC26-NW10	0,7 - 3,0	10,0	• Grip in longitudinal direction of the profile on the side of the clip
KC39-NW10	0,7 - 3,0	10,0	• Grip in longitudinal direction of the profile on the side of the clip
KC36-NW13	0,7 - 3,0	13,0	• Grip in longitudinal direction of the profile on the side of the clip
KC28-NW4,5	3,0 - 6,0	4,5	• Grip in longitudinal direction of the profile on the side of the clip
KC29-NW7,5	3,0 - 6,0	7,5	• Grip in longitudinal direction of the profile on the side of the clip
KC27-NW10	3,0 - 6,0	10,0	• Grip in longitudinal direction of the profile on the side of the clip
KC42-NW14	3,0 - 6,0	14,0	• Grip in longitudinal direction of the profile on the side of the clip

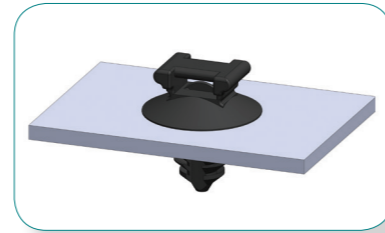


Clips with fir tree & with arrowhead

Clips with fir tree and clips with arrowhead are specially designed for mounting of the clip in a bore hole. To select the right type of clip, you should take into account the profile thickness and the diameter of the bore hole. WKK offers clips with fir tree by which the lamellae ensure a firm attachment in the bore hole. By this, the thickness of the profile may vary. WKK also offers clips with arrowhead by which the arrowhead ensures a solid attachment in the bore hole.

Material specifications:

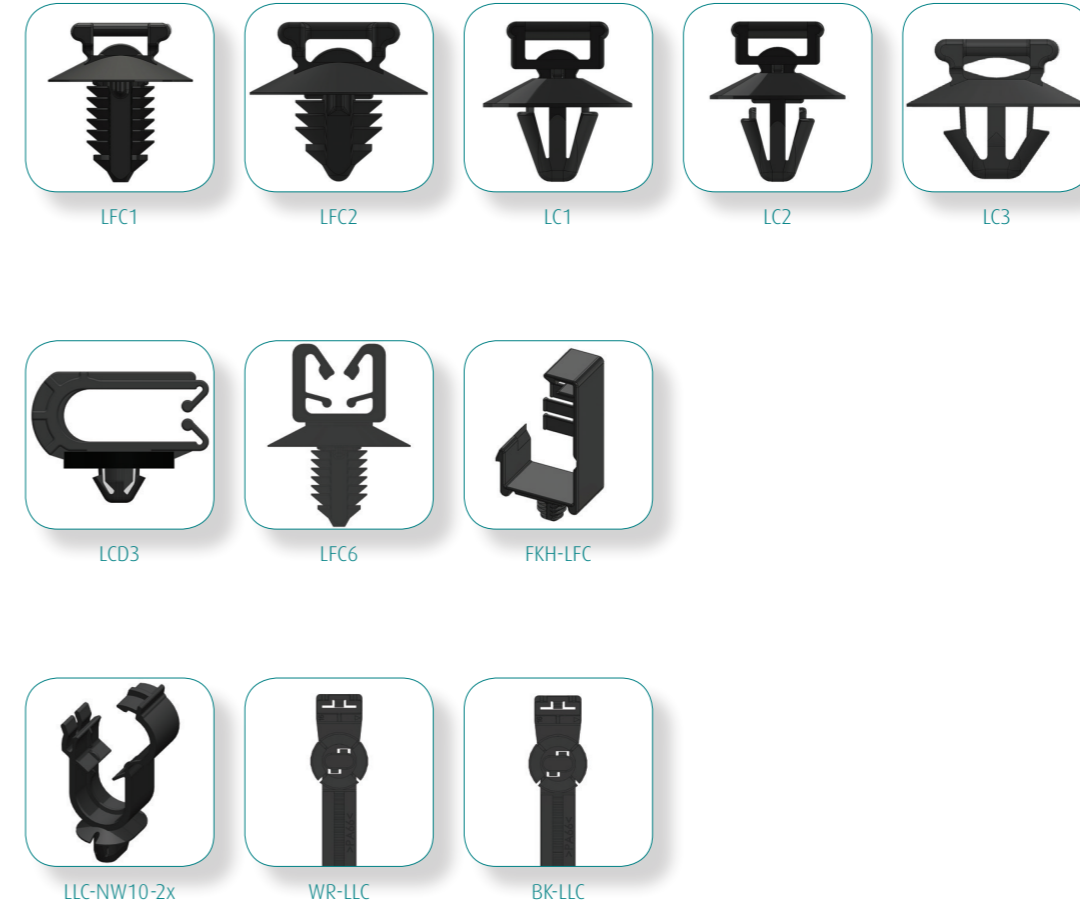
Clip : Polyamide 6.6 HS, black, impact resistant, heat resistant, UV resistant
 Cable tie : Polyamide 6.6 HS, black, impact resistant, heat resistant, UV resistant
 Temperature range : -40 °C to +120 °C (short time 140 °C)



Types of clips with fir tree & with arrowhead

Typenr.	Hole diameter in mm	Sheet thickness in mm	Cable diameter in mm
LFC1 *	∅ 6,3 - 7,0	0,5 - 6,0	1,0 - 45,0
LFC2 *	∅ 6,3 - 7,0	0,5 - 3,0	1,0 - 45,0
LC1 *	∅ 6,5 ± 0,2	0,7 - 2,0	1,0 - 45,0
LC2 *	∅ 6,5 ± 0,2	2,0 - 3,5	1,0 - 45,0
LC3 *	∅ 6,5 - 7,0	1,8 - 2,8	1,0 - 45,0
LCD3	∅ 6,3 - 6,7	0,6 - 1,2	3,0 - 8,5
LFC6	∅ 6,3 - 7,0	0,7 - 6,0	4,5 - 6,0
FKH-LFC	∅ 6,3 - 6,7	0,5 - 4,5	
LLC-NW10-2x	∅ 6,2 - 12,2	2,0 - 3,0	2x 10,0
WR-LLC	∅ 6,3 - 12,3	0,7 - 3,0	4,5 - 30,0
BK-LLC	∅ 6,3 - 12,3	0,7 - 3,0	1,0 - 40,0

* = Also available with cable tie: 200 x 4,8 mm (PA 6.6 / black)

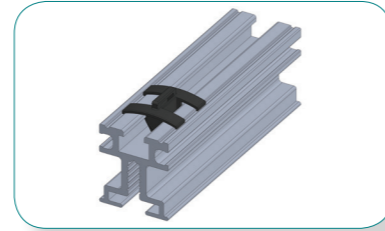


Solar clips

Solar clips are ideal for attachment of cables, wires and tubes on a profile. To choose the right type of solar clip, you need to take into account the dimensions of the profile. The types SC1 and SC2 can be mounted, in combination with a cable tie, in a M8 or M10 aluminium profile. The type of clip SKC1 can be mounted on a profile without a cable tie. This clip is designed for the attachment of two cables with a diameter of 6 mm.

Material specifications:

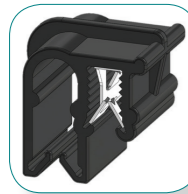
- Clip : Polyamide 6.6 HS, black, impact resistant, heat resistant, UV resistant
- Cable tie : Polyamide 6.6 HS, black, impact resistant, heat resistant, UV resistant
- Temperature range : -40 °C to +120 °C (short time 140 °C)
- Metal clamp : Spring steel, hardened surface
- : The surface replies to the highest requirements for corrosion protection



Types of solar clips

Typenr.	Mounting of clip	Mounting of cable
SKC1	• Profile thickness of 0,7 - 3,0 mm	• 2 x 6 mm, without cable tie
SC1 *	• M10 / 7,0 mm deep	• Attachment with cable tie
SC2 *	• M8 / 6,9 mm deep	• Attachment with cable tie

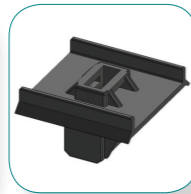
* = Also available with cable tie: 200 x 4,8 mm (PA 6.6 / black)



SKC1

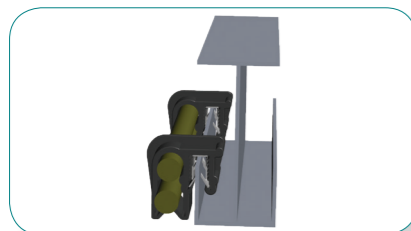


SC1

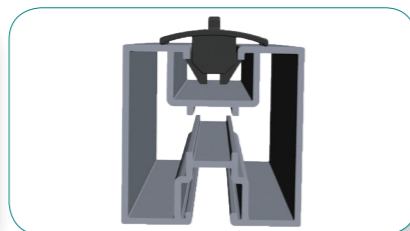


SC2

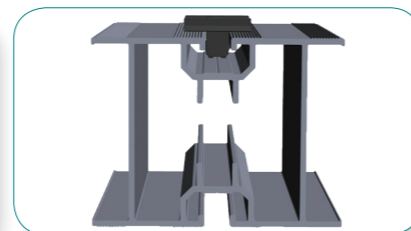
Mounting of cable



SKC1



SC1



SC2

Custom made clips

Besides the standard range of fixation clips, WKK also offers you the possibility to have clips custom made to meet your specific requirements.

Through our subsidiary WKK Automotive, we have access to our own production facility which enables us to develop and produce customized clips.

Would you like more information or advice about the development of custom made clips? Please contact our sales department. We are at your service.